



# ASSO



**D O M**

## DESCRIPTION du TENDEUR ASSO \ PRODUCT RANGE

Le tendeur ASSO est un composant mécanique polyvalent, d'une très simple utilisation.

Sa principale application est la tension automatique des CHAINES et des COURROIES.

Ce catalogue est particulièrement orienté et illustre en détails les différents montages possibles avec les différents accessoires proposés sur les éléments de base AB-AF-AD.

Il peut aussi être utilisé pour d'autres applications mécaniques suivant vos exigences et les problèmes à solutionner. Nos services techniques sont à votre disposition pour vous fournir toutes informations techniques.

*Asso is a mechanical versatile component and simple to use, its main application field is the automatic tension of chain or belts. The catalogue is particularly and it illustrates in detail both the different components AB, AF and AD and the accessories, which can be combined.*

*Since it is very versatile, it can be also used in other mechanical application fields according to the specific needs of manufacturer. Our technical staff stays at Your disposal for every type of information.*



**AB** - Pag. 89



**ABB** - Pag. 89



**AF** - Pag. 90



**AFB** - Pag. 90



**AD** - Pag. 91



**ADB** - Pag. 91



**T** - Pag. 93



**R** - Pag. 93



**S** - Pag. 93



**P** - Pag. 94



**C** - Pag. 94



**TL** - Pag. 95

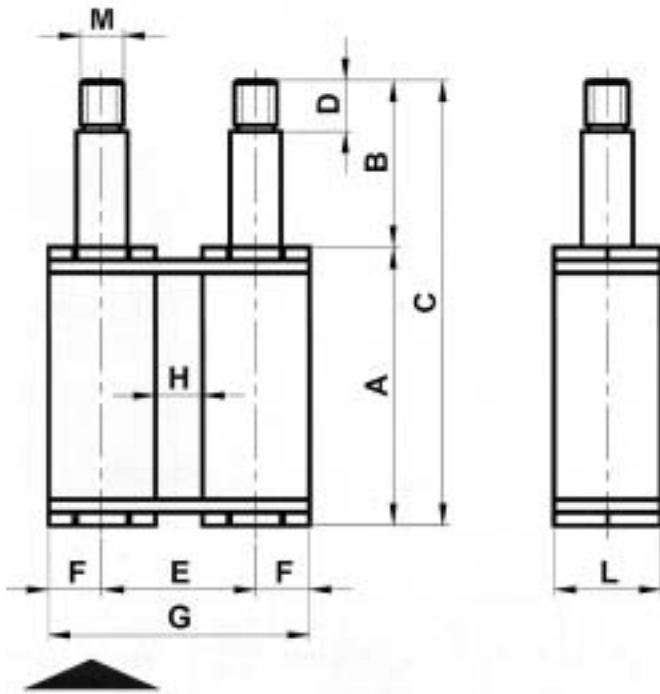


**DP** - Pag. 95



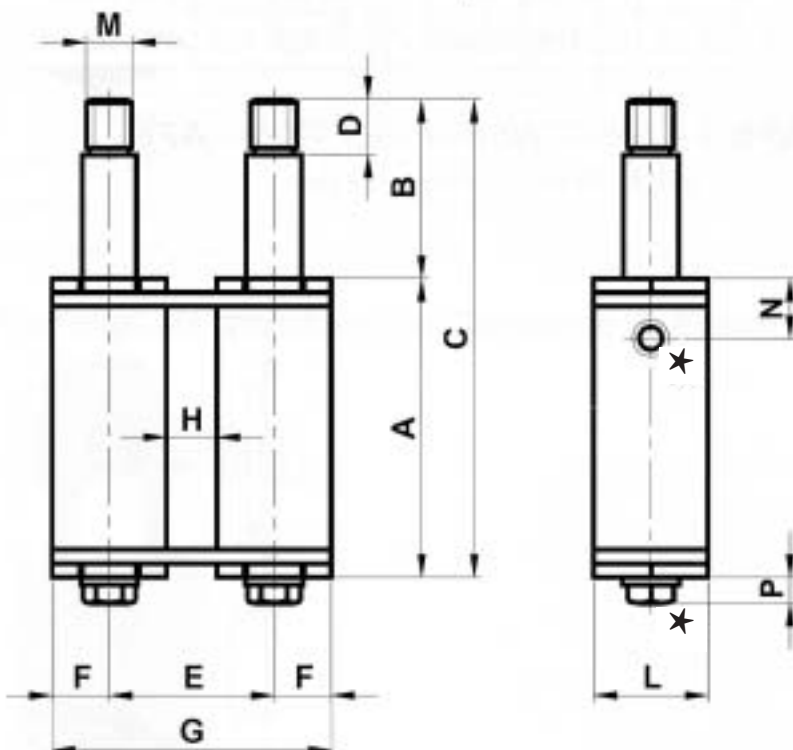
**DA** - Pag. 95

**TENDEUR ASSO - Type AB / TENSIONER ASSO TYPE: AB**



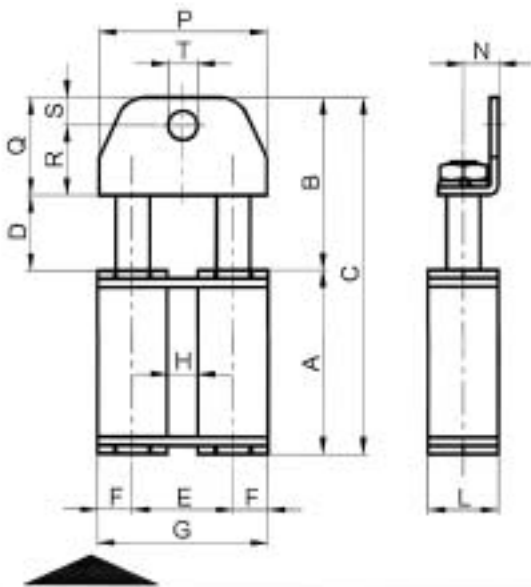
Type	cod.	A	B	C	D	E	F	G	H	L	M	N	P	Newton	POIDS Weight en kg	Type	cod.
AB1	AS010000	65	39	104	12	36	12.5	61	11	25	M10	15	/	0 - 280	0.33	ABB1	AS010001
AB2	AS010010	79	50	129	15	42.5	15	72.5	12.5	30	M10	20	/	0 - 420	0.58	ABB2	AS010011
AB3	AS010020	100.5	57	157.5	15	49.5	17.5	84.5	14.5	35	M10	/	7.1	0 - 800	0.92	ABB3	AS010021

**TENDEUR ASSO - Type ABB / TENSIONER ASSO TYPE: ABB**  
avec vis de Pré-tension / with preloading screw



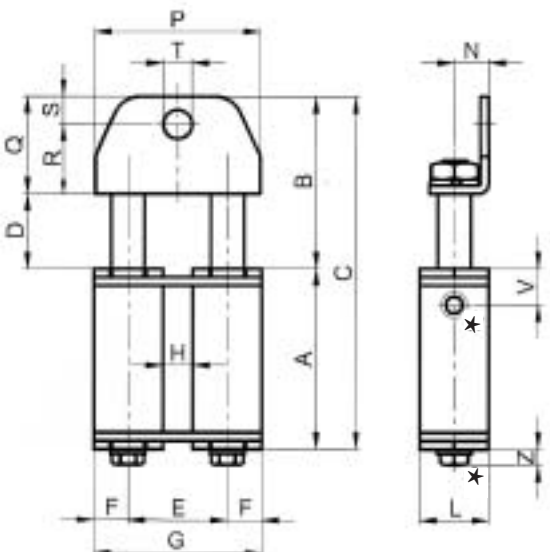
★ Vis de Pré-tension / Preloading screw

**TENDEUR ASSO - Type AF / TENSIONER ASSO TYPE: AF**



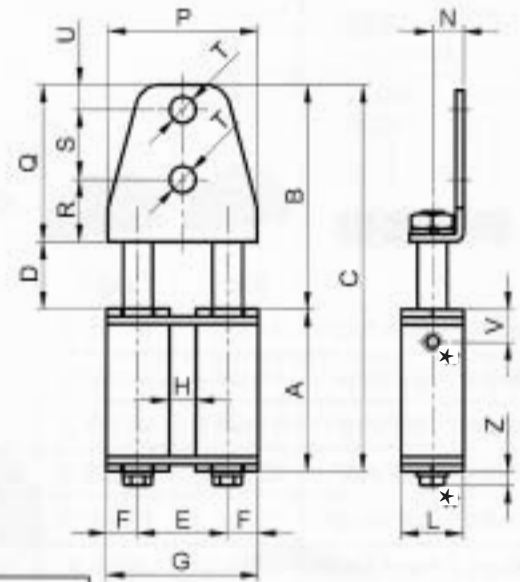
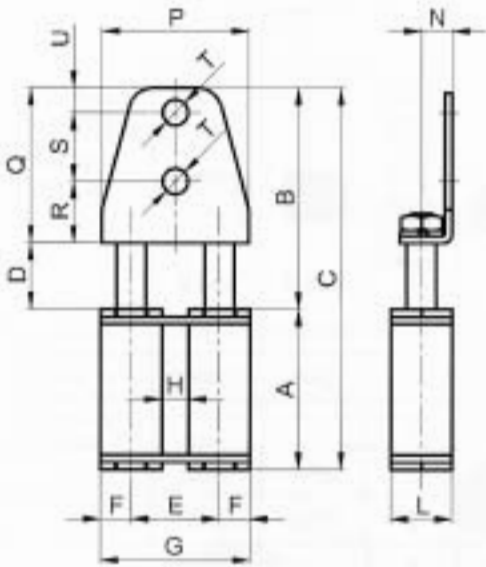
Type	cod.	A	B	C	D	E	F	G	H	L	N	P	Q	R	S	∅ T	V	Z	New.	POIDS Weight kg	Type	cod.
AF1-8	AS010024	65	62	127	27	36	12.5	61	11	25	12.5	60	35	25	10	8.5	15	/	0-280	0.4	AFB1-8	AS010028
AF1-10	AS010025	65	62	127	27	36	12.5	61	11	25	12.5	60	35	25	10	10.5	15	/	0-280	0.4	AFB1-10	AS010029
AF1-16	AS010026	65	62	127	27	36	12.5	61	11	25	12.5	60	35	25	10	16	15	/	0-280	0.4	AFB1-16	AS010030
AF2-10	AS010035	79	85	164	35	42.5	15	72.5	12.5	30	15	70	50	38	12	10.5	20	/	0-420	0.7	AFB2-10	AS010039
AF2-12	AS010036	79	85	164	35	42.5	15	72.5	12.5	30	15	70	50	38	12	12.5	20	/	0-420	0.7	AFB2-12	AS010040
AF2-16	AS010037	79	85	164	35	42.5	15	72.5	12.5	30	15	70	50	38	12	16.5	20	/	0-420	0.7	AFB2-16	AS010041
AF3-14	AS010047	100.5	102	202.5	42	49.5	17.5	84.5	14.5	35	20	80	60	46	14	M14	/	7.1	0-800	1.25	AFB3-14	AS010053
AF3-16	AS010048	100.5	102	202.5	42	49.5	17.5	84.5	14.5	35	20	80	60	46	14	M16	/	7.1	0-800	1.25	AFB3-16	AS010054
AF3-20	AS010049	100.5	102	202.5	42	49.5	17.5	84.5	14.5	35	20	80	60	46	14	M20	/	7.1	0-800	1.25	AFB3-20	AS010055

**TENDEUR ASSO - Type AFB / TENSIONER ASSO TYPE: AFB**  
avec vis de Pré-tension / with preloading screw



★ Vis de Pré-tension / Preloading screw

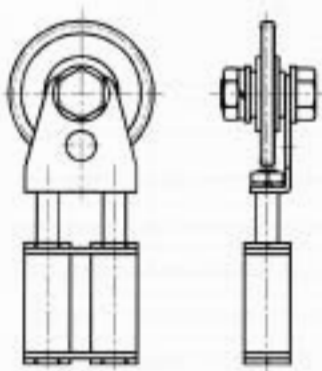
**TENDEUR ASSO - Type AD / TENSIONER ASSO TYPE: AD**  
**TENDEUR ASSO - Type ADB / TENSIONER ASSO TYPE: ADB**



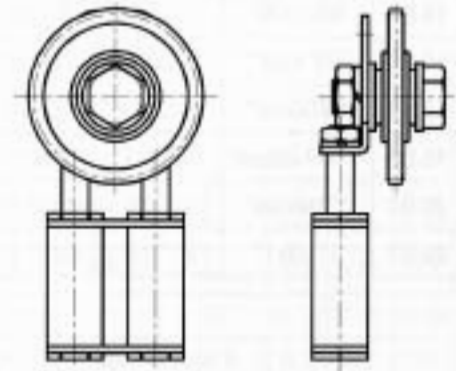
\* Vis de Pré-tension  
*Preloading screw*

Type	cod.	A	B	C	D	E	F	G	H	L	N	P	Q	R	S	Ø T	U	V	Z	New.	POIDS Weight	Type	cod.
AD1-8	AS010180	65	90	155	27	36	12.5	61	11	25	12.5	60	63	25	28	8.5	10	15	/	0-280	0.5	ADB1-8	AS010184
AD1-10	AS010181	65	90	155	27	36	12.5	61	11	25	12.5	60	63	25	28	10.5	10	15	/	0-280	0.5	ADB1-10	AS010185
AD1-16	AS010182	65	90	155	27	36	12.5	61	11	25	12.5	60	63	25	28	16	10	15	/	0-280	0.5	ADB1-16	AS010186
AD2-10	AS010190	79	112	191	35	42.5	15	72.5	12.5	30	15	70	77	40	25	10.5	12	20	/	0-420	0.9	ADB2-10	AS010194
AD2-12	AS010191	79	112	191	35	42.5	15	72.5	12.5	30	15	70	77	40	25	12.5	12	20	/	0-420	0.9	ADB2-12	AS010195
AD2-16	AS010192	79	112	191	35	42.5	15	72.5	12.5	30	15	70	77	40	25	16.5	12	20	/	0-420	0.9	ADB2-16	AS010196
AD3-16	AS010205	100.5	130	230.5	42	49.5	17.5	84.5	14.5	35	20	80	88	46	28	M16	14	/	7.1	0-800	1.5	ADB3-16	AS010209
AD3-20	AS010206	100.5	130	230.5	42	49.5	17.5	84.5	14.5	35	20	80	88	46	28	M20	14	/	7.1	0-800	1.5	ADB3-20	AS010210

**Exemples de montage Pignon \ Examples of sprocket installation**












Pignon monté à l'intérieur du support travaillant dans l'axe du tendeur.  
*Internal sprocket to the Support*



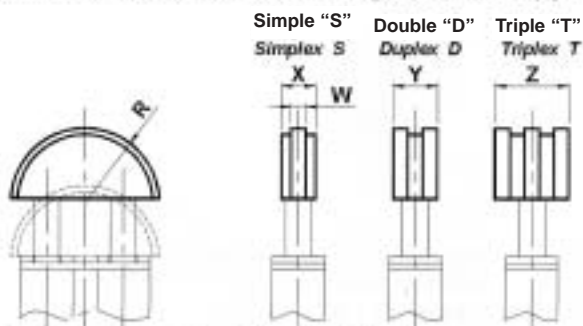
Pignon monté à l'extérieur du support travaillant en déporté.  
*Internal sprocket to the Support*

## TABLEAU DES COMPOSANTS "KIT" / ACCESSORIES TABLE

Chaîne DIN 8187		Type						Taille Grand. Size	Type		Largeur courroie max belt width
ISO	Pas Pitch	T	R	S	P	C	TL		DP	DA	
											
		pag. 93	pag. 93	pag. 93	pag. 94	pag. 94	pag. 95	pag. 95	pag. 95		
06-B1	3/8"x7/32"	T1 3/8" S	R1 3/8" S	S1 3/8" S	P1 3/8" S	C1 3/8" S	TL1 3/8" S	1	DP30	DA30	30
08-B1	1/2"x5/16"	T1 1/2" S	R1 1/2" S	S1 1/2" S	P1 1/2" S	C1 1/2" S	TL1 1/2" S	1	DP40	DA40	40
10-B1	5/8"x3/8"	T1 5/8" S	R1 5/8" S					1			
10-B1	5/8"x3/8"	T2 5/8" S	R2 5/8" S	S2 5/8" S	P2 5/8" S	C2 5/8" S	TL2 5/8" S	2	DP40	DA40	40
12-B1	3/4"x7/16"	T2 3/4" S	R2 3/4" S	S2 3/4" S	P2 3/4" S	C2 3/4" S	TL2 3/4" S	2	DP60	DA60	55
16-B1	1"x17.02mm	T3 1" S	R3 1" S	S3 1" S	P3 1" S	C3 1" S	TL3 1" S	3			
20-B1	1"1/4x3/4"	T3 1" 1/4 S	R3 1" 1/4 S	S3 1" 1/4 S				3			
24-B1	1"1/2x1"	T3 1" 1/2 S	R3 1" 1/2 S	S3 1" 1/2 S				3			
06-B2	3/8"x7/32"	T1 3/8" D	R1 3/8" D	S1 3/8" D			TL1 3/8" D	1			
06-B2	3/8"x7/32"				P2 3/8" D	P2 3/8" D		2			
08-B2	1/2"x5/16"	T1 1/2" D	R1 1/2" D	S1 1/2" D			TL1 1/2" D	1			
08-B2	1/2"x5/16"				P2 1/2" D	C2 1/2" D		2			
10-B2	5/8"x3/8"	T1 5/8" D	R1 5/8" D					1			
10-B2	5/8"x3/8"	T2 5/8" D	R2 5/8" D	S2 5/8" D			TL2 5/8" D	2			
10-B2	5/8"x3/8"				P3 5/8" D	C3 5/8" D		3			
12-B2	3/4"x7/16"	T2 3/4" D	R2 3/4" D	S2 3/4" D			TL2 3/4" S	2			
12-B2	3/4"x7/16"				P3 3/4" D	C3 3/4" D		3			
16-B2	1"x17.02mm	T3 1" D	R3 1" D	S3 1" D	P3 1" D	C3 1" D	TL3 1" D	3			
20-B2	1"1/4x3/4"	T3 1" 1/4 D	R3 1" 1/4 D	S3 1" 1/4 D				3			
24-B2	1"1/2x1"	T3 1" 1/2 D	R3 1" 1/2 D	S3 1" 1/2 D				3			
06-B3	3/8"x7/32"	T1 3/8" T	R1 3/8" T	S1 3/8" T				1			
08-B3	1/2"x5/16"	T1 1/2" T	R1 1/2" T	S1 1/2" T				1			
10-B3	5/8"x3/8"	T1 5/8" T	R1 5/8" T					1			
10-B3	5/8"x3/8"	T2 5/8" T	R2 5/8" T	S2 5/8" T				2			
12-B3	3/4"x7/16"	T2 3/4" T	R2 3/4" T	S2 3/4" T				2			
16-B3	1"x17.02mm	T3 1" T	R3 1" T	S3 1" T				3			
20-B3	1"1/4x3/4"	T3 1" 1/4 T	R3 1" 1/4 T	S3 1" 1/4 T				3			
24-B3	1"1/2x1"	T3 1" 1/2 T	R3 1" 1/2 T	S3 1" 1/2 T				3			

### Accessoires pour tendeur - type T

#### Accessories for chain tighteners type: T



Patin a profil semi-circulaire adapté pour des entre-axes courts.  
Travaillant dans l'axe.

Matériau: polyéthylène à haute densité moléculaire.  
Vitesse de travail:  $\leq 20$  M/mn.

Température de fonctionnement:  $\leq 70^\circ\text{C}$ ;

Semi-circular sliding block suitable for reduced interaxis or for installation close to the pinion.

Material: Polyethylene high molecular density.

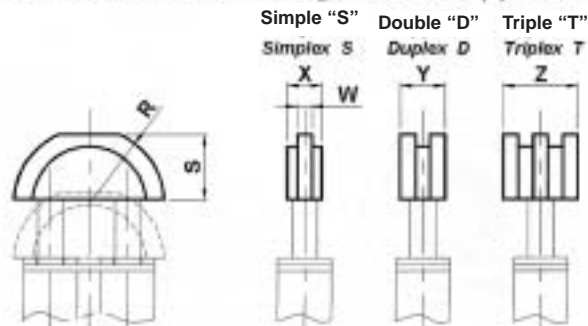
Operating speed  $\leq 20$  M/min.

Sliding block operating temperature  $< 70^\circ\text{C}$ .



### Accessoires pour tendeur - type R

#### Accessories for chain tighteners type: R



Patin a profil semi-circulaire réduit adapté pour des entre-axes longs.  
Travaillant dans l'axe.

Matériau: polyéthylène à haute densité moléculaire.  
Vitesse de travail:  $\leq 20$  M/mn.

Température de fonctionnement:  $\leq 70^\circ\text{C}$ ;

Semi-circular lowered sliding block suitable for large interaxis.

Material: Polyethylene high molecular density.

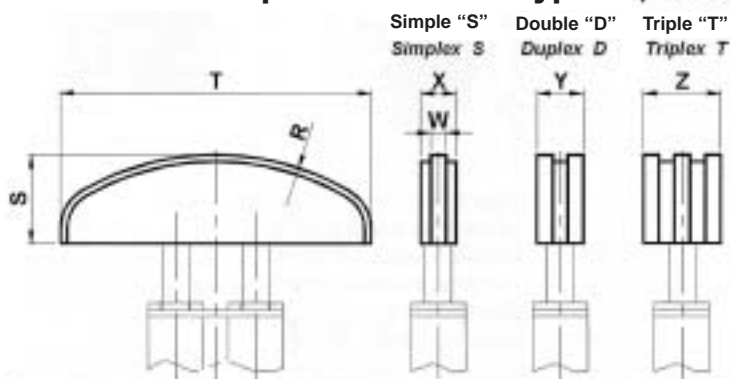
Operating speed  $\leq 20$  M/min.

Sliding block operating temperature  $< 70^\circ\text{C}$ .



Type	cod. S	cod. D	cod. T	R	S	W	X	Y	Z	POIDS - Weight kg			Type	cod. S	cod. D	cod. T
										S.	D.	T.				
T1 3/8"	AS010061	AS010076	AS010091	35	30	5	16	18	25	0.03	0.03	0.04	R1 3/8"	AS010396	AS010411	AS010426
T1 1/2"	AS010062	AS010077	AS010092	35	30	7	16	20.5	34	0.03	0.03	0.06	R1 1/2"	AS010397	AS010412	AS010427
T1 5/8"	AS010063	AS010078	AS010093	35	37	9	17	25	42	0.03	0.03	0.06	R1 5/8"	AS010398	AS010413	AS010428
T2 5/8"	AS010064	AS010079	AS010094	45	37	9	17	25	42	0.04	0.08	0.12	R2 5/8"	AS010399	AS010414	AS010429
T2 3/4"	AS010065	AS010080	AS010095	45	37	11	17	30	49	0.05	0.09	0.14	R2 3/4"	AS010400	AS010415	AS010430
T3 1"	AS010066	AS010081	AS010096	55	46	16	18	47	79.5	0.08	0.2	0.32	R3 1"	AS010401	AS010416	AS010431
T3 1" 1/4	AS010067	AS010082	AS010097	55	46	18	20	54	91	0.32	0.5	0.60	R3 1" 1/4	AS010402	AS010417	AS010432
T3 1" 1/2	AS010068	AS010083	AS010098	55	46	24	24	72	120	0.33	0.54	0.65	R3 1" 1/2	AS010403	AS010418	AS010433

### Accessoires pour tendeur - type S / Accessories for chain tighteners type: S



Patin a profil allongé, adapté pour des entre-axes longs.  
Travaillant dans l'axe.

Matériau: polyéthylène à haute densité moléculaire.  
Vitesse de travail:  $\leq 20$  M/mn.

Température de fonctionnement:  $\leq 70^\circ\text{C}$ ;

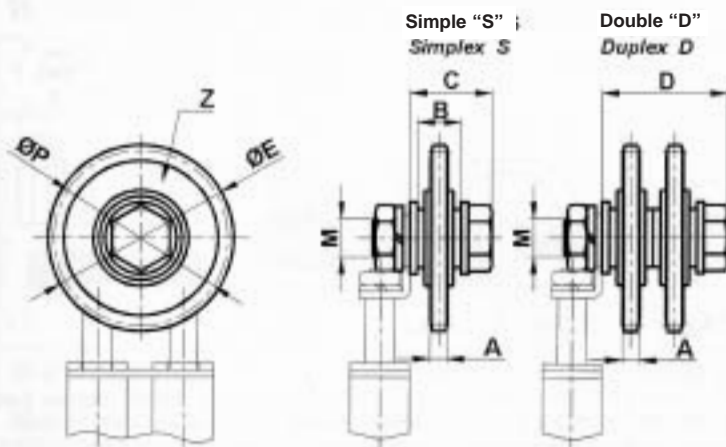
Sliding block for large interaxis. Material: Polyethylene high molecular density.

Operating speed  $\leq 20$  M/min.

Sliding block operating temperature  $\leq 70^\circ\text{C}$ .

Type	cod. S	cod. D	cod. T	R	S	T	W	X	Y	Z	POIDS Weight en kg		
											S.	D.	T.
S1 3/8"	AS010115	AS010130	AS010145	120	40	140	5	20	20	25	0.08	0.08	0.1
S1 1/2"	AS010116	AS010131	AS010146	120	40	140	7	20	20	35	0.08	0.08	0.12
S2 5/8"	AS010117	AS010132	AS010147	140	40	140	9	20	25	42	0.1	0.12	0.3
S2 3/4"	AS010118	AS010133	AS010148	140	40	140	11	20	30	49	0.12	0.65	0.35
S3 1"	AS010119	AS010134	AS010149	160	40	140	16	25	45	79.5	0.2	0.5	0.8
S3 1" 1/4	AS010120	AS010135	AS010150	160	40	140	18	25	54	90	0.8	1.3	1.5
S3 1" 1/2	AS010121	AS010136	AS010151	160	40	140	24	25	72	120	0.8	1.3	1.6

## Accessoires pour tendeur - type P / Accessories for chain tighteners type: P

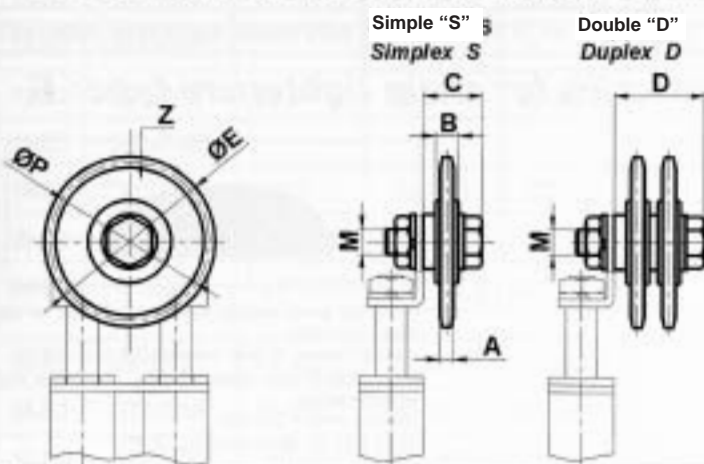


Pignon en acier monté sur roulement à billes étanches.  
Roulement large.  
Matériel : polyéthylène à haute densité moléculaire.  
Vitesse de travail :  $\leq 60$  M/mn.  
Température de fonctionnement :  $\leq 100^\circ\text{C}$ .

The pinion is made of steel with enlarged bearing.  
Operating speed  $\leq 60$  M/min.  
Operating temperature  $< 100^\circ\text{C}$ .

Type	cod. S	cod. D	A	B	C	D	ØE	M	ØP	Z	POIDS	
											Weight S.	kg D.
P1 3/8"	AS010291	/	5.3	18.3	31.3	/	68.0	M16	63.9	21	0.25	/
P1 1/2"	AS010292	/	7.2	18.3	31.3	/	77.8	M16	73.14	18	0.35	/
P2 3/8"	/	AS010301	5.3	18.3	/	49.6	68.0	M16	63.9	21	/	0.40
P2 1/2"	/	AS010302	7.2	18.3	/	49.6	77.8	M16	73.14	18	/	0.60
P2 5/8"	AS010293	/	9.1	18.3	31.3	/	93.0	M16	86.39	17	0.50	/
P2 3/4"	AS010294	/	11.1	18.3	31.3	/	99.8	M16	91.63	15	0.65	/
P3 5/8"	/	AS010303	9.1	18.3	/	49.6	93.0	M16	86.39	17	/	0.89
P3 3/4"	/	AS010304	11.1	18.3	/	49.6	99.8	M16	91.63	15	/	1.15
P3 1"	AS010295	AS010305	16.2	17.7	36.7	68.4	109.0	M20	94.14	12	0.98	1.76

## Accessoires pour tendeur - type C / Accessories for chain tighteners type: C

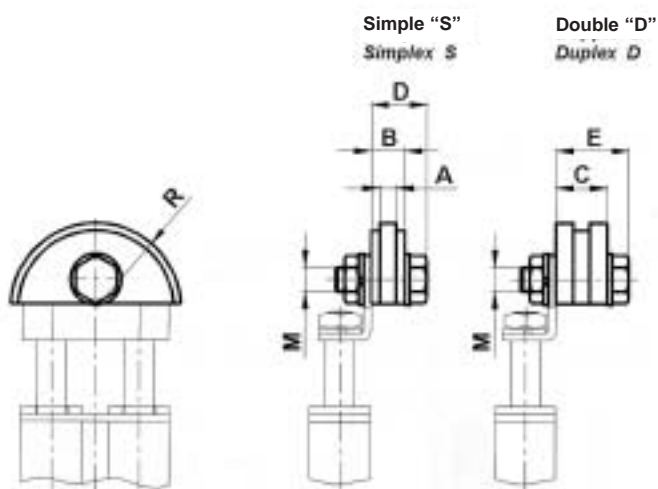


Pignon en acier monté sur roulement à billes étanches.  
Roulement standard.  
Matériel : polyéthylène à haute densité moléculaire.  
Vitesse de travail :  $\leq 60$  M/mn.  
Température de fonctionnement :  $\leq 100^\circ\text{C}$ .

The pinion is made of steel with a bearing (standardized).  
Operating temperature  $< 100^\circ\text{C}$ .  
Operating speed  $< 60$  M/min.

Type	cod. S	cod. D	A	B	C	D	ØE	M	ØP	Z	POIDS	
											Weight S.	kg D.
C1 3/8"	AS010440	/	5.3	9	20	/	49.3	M10	45.81	15	0.10	/
C1 1/2"	AS010441	/	7.2	9	20	/	65.5	M10	61.09	15	0.19	/
C2 3/8"	/	AS010450	5.3	9	/	31	49.3	M10	45.81	15	/	0.22
C2 1/2"	/	AS010451	7.2	9	/	33	65.5	M10	61.09	15	/	0.36
C2 5/8"	AS010442	/	9.1	12	25	/	83.0	M12	76.36	15	0.35	/
C2 3/4"	AS010443	/	11.1	12	25	/	99.8	M12	91.63	15	0.70	/
C3 5/8"	/	AS010452	9.1	12	/	42	83.0	M12	76.36	15	/	0.58
C3 3/4"	/	AS010453	11.1	12	/	44.5	99.8	M12	91.63	15	/	1.24
C3 1"	AS010444	AS010454	16.2	15	34	66	117.0	M20	106.12	13	1.12	/

## Accessoires pour tendeur - type TL / Accessories for chain tighteners type: TL



Patin a profil semi-circulaire, adapté pour des entre-axes courts. Montage le plus près du pignon.

Matériel : polyéthylène à haute densité moléculaire.

Vitesse de travail : 20 M/mn. Température de fonctionnement : 70°C

Semi-circular sliding block suitable for reduced interaxis or for installation close to the pinion. Material: Polyethylene high molecular density.

Operating speed  $\leq$  20 m/min.

Sliding block operating temperature  $\leq$  70°C.

Type	cod. S	cod. D	A	B	C	D	E	M	R	POIDS, Weight en kg	
										S.	D.
TL1 3/8"	AS010351	AS010366	5	10	18	19	27	M10	35	0.07	0.08
TL1 1/2"	AS010352	AS010367	7	14	20.5	23	29.5	M10	35	0.09	0.1
TL2 5/8"	AS010354	AS010669	9	16.5	25	25.5	34	M10	45	0.11	0.12
TL2 3/4"	AS010355	AS010370	11	17.5	30	26.5	39	M10	45	0.11	0.13
TL3 1"	AS010356	AS010371	16	18	47	28.5	57.5	M12	55	0.19	0.27

## Accessoires pour tendeur de Courroies / Accessories for belt-tighteners

Poulie en polyamide - type DP

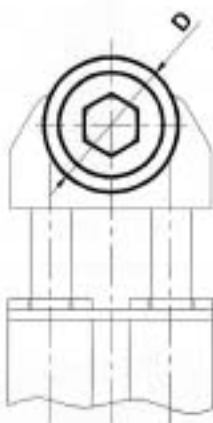
Rollerset of polyamid - Type DP

\* avec vis M / with screw M

Poulie en acier zingué - type DA

Rollerset of galvanized steel - Type DA

# avec vis P / with screw P

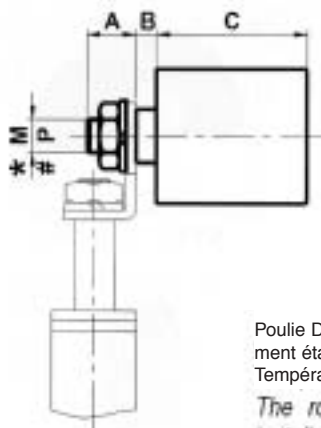


Poulie DP en polyamide montée sur roulement étanche.

Température de fonctionnement :  $\leq$  70°C.

The roller DP is in plastic installed on greased bearings.

Roller operating temperature  $\leq$  70°C.



Poulie DA en acier zingué montée sur roulement étanche.

Température de fonctionnement :  $\leq$  100°C.

The roller DA is in galvanized steel installed on greased bearings. Roller operating temperature  $\leq$  100°C.

Type	Cod.N°	POIDS, Weight en kg	A	B	C	Ø D	* M	# P	Elem. de Tens. Tension. Elements	Type	Cod.N°	POIDS, Weight en kg
DP30	CE070300	0.08	13	3	35	30	M8	M8	1	DA30	CE070285	0.16
DP40	CE070302	0.18	16	6	45	40	M10	M10	1-2	DA40	CE070287	0.37
DP60	CE070304	0.4	21	8	60	60	M12	M16	3	DA60	CE070289	0.85

## ELEMENTS SIMPLES / SIMPLE ELEMENTS

Les éléments SB, SA, et SE, permettent une composition extrêmement simple et appropriée en fonction des impératifs d'encombrement (place disponible). Ils peuvent s'incorporer facilement dans divers champs d'applications pour solutionner des petits problèmes de tension.

Hormis les modules standard présentés dans ce catalogue, nous pouvons sur demande, étudier des systèmes spécifiques à vos exigences.

*The products SB, SA and SE are elements, which have an extremely simple composition and thanks to their constructive form they can be easily used in the different application fields in order to solve small or medium tension-problems.*

*Besides the fixing systems you can find in this catalogue, we are able to study for you particular elements suitable to satisfy Your specific needs.*



**SB** - Pag.97



**SBB** - Pag.97



**SA** - Pag.98



**SAB** - Pag.98



**SE** - Pag.99



**SEB** - Pag.99



**F** - Pag.100



**FD** - Pag.100



**L** - Pag.101



**STL** - Pag.102



**SPL** - Pag.103



**SCL** - Pag.103



**ST** - Pag.104



**SP** - Pag.104



**AH** - Pag.106



**TH** - Pag.107



**DPH** - Pag.107



**DAH** - Pag.107

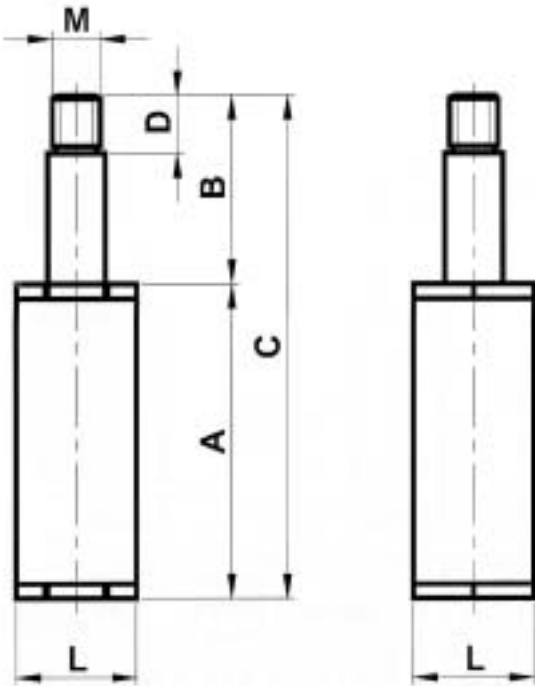


**PH** - Pag.108



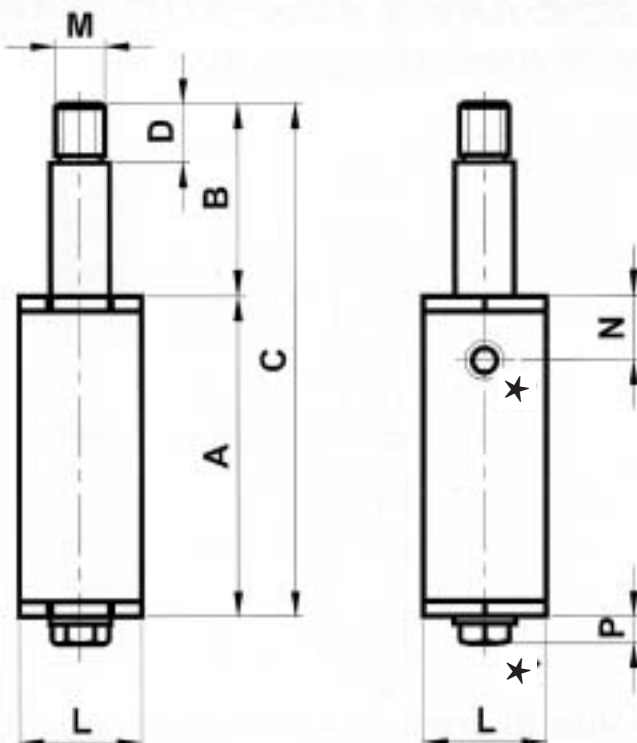
**CH** - Pag.108

**TENDEUR ASSO - Type SB / TENSIONER ASSO TYPE: SB**



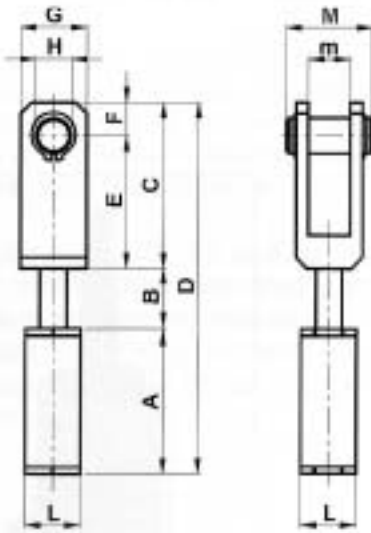
Type	cod.	A	B	C	D	L	M	N	P	Newton	POIDS Weight	Type	cod.
SB1	AS010470	59	39	98	12	25	M10	18	/	0-140	0.16	SBB1	AS010480
SB2	AS010471	73	50	123	15	30	M10	20	/	0-210	0.25	SBB2	AS010481
SB3	AS010472	92.5	57	149.5	15	35	M10	/	7.1	0-400	0.43	SBB3	AS010482

**TENDEUR ASSO - Type SBB / TENSIONER ASSO TYPE: SBB**  
avec vis de Pré-tension / with preloading screw



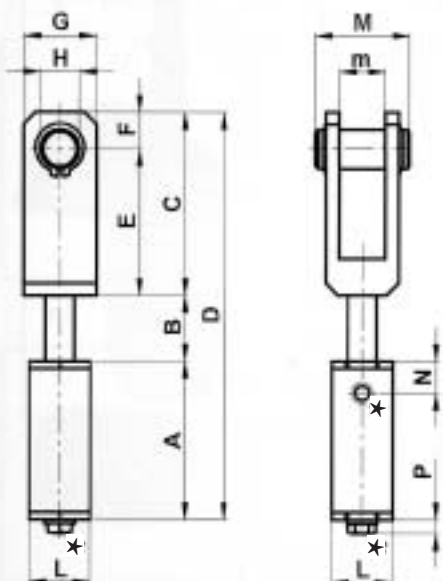
★ Vis de Pré-tension / Preloading screw

**TENDEUR ASSO - Type SA / TENSIONER ASSO TYPE: SA**



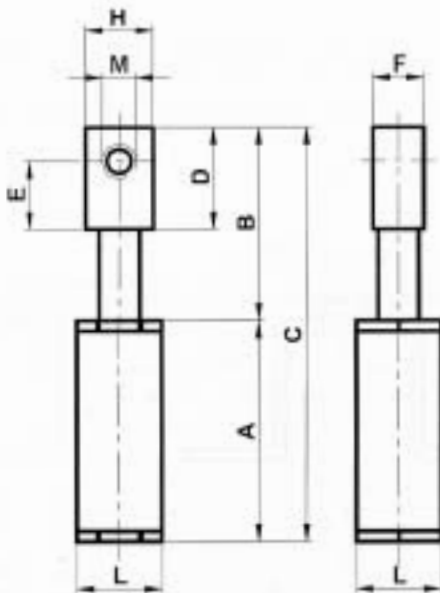
Type	cod.	A	B	C	D	E	F	G	H	L	M	m	N	P	Newton	POIDS Weight en kg	Type	cod.
SA1/0	AS010489	59	27	75	161	60	15	30	16	25	40	19	18	/	0-140	0.31	SAB1/0	AS010509
SA2/0	AS010490	73	35	75	183	60	15	30	16	30	40	19	20	/	0-140	0.4	SAB2/0	AS010510
SA2/1	AS010491	73	35	85	193	70	15	30	16	30	45	19	20	/	0-210	0.44	SAB2/1	AS010511
SA2/2	AS010492	73	35	75	183	60	15	30	16	30	60	37	20	/	0-210	0.45	SAB2/2	AS010512
SA2/3	AS010493	73	35	85	193	70	15	30	16	30	65	37	20	/	0-210	0.5	SAB2/3	AS010513
SA3/4	AS010494	92.5	42	85	219.5	70	15	35	16	35	80	52	/	7.1	0-400	1.03	SAB3/4	AS010514
SA3/5	AS010495	92.5	42	95	229.5	77.5	17.5	40	20	35	45	19	/	7.1	0-400	0.72	SAB3/5	AS010515
SA3/6	AS010496	92.5	42	95	229.5	77.5	17.5	40	20	35	77	51	/	7.1	0-400	1.3	SAB3/6	AS010516
SA3/7	AS010497	92.5	42	95	229.5	77.5	17.5	40	20	35	110	80	/	7.1	0-400	1.63	SAB3/7	AS010517

**TENDEUR ASSO - Type SAB / TENSIONER ASSO TYPE: SAB**  
avec vis de Pré-tension / with preloading screw



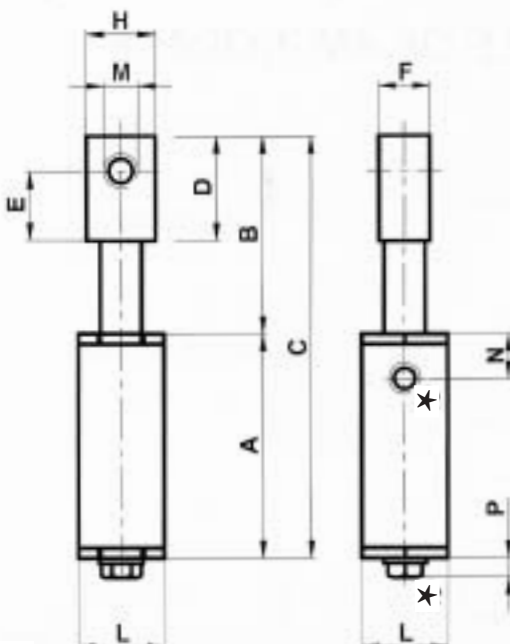
★ Vis de Pré-tension / Preloading screw

**TENDEUR ASSO - Type SE / TENSIONER ASSO TYPE: SE**



Type	cod.	A	B	C	D	E	F	H	L	M	N	P	Newton	POIDS Weight en kg	Type	cod.
SE1-8	AS010525	59	57	118	30	20	15	20	25	M8	18	/	0-140	0.22	SEB1-8	AS010540
SE1-10	AS010526	59	57	118	30	20	15	20	25	M10	18	/	0-140	0.2	SEB1-10	AS010541
SE1-16	AS010527	59	57	118	30	20	15	30	25	M16	18	/	0-140	0.25	SEB1-16	AS010542
SE2-10	AS010528	73	65	138	30	20	15	20	30	M10	20	/	0-210	0.31	SEB2-10	AS010543
SE2-16	AS010529	73	65	138	30	20	15	30	30	M16	20	/	0-210	0.34	SEB2-16	AS010544
SE3-12	AS010530	92.5	72	164.5	30	20	15	20	35	M12	/	7.1	0-400	0.49	SEB3-12	AS010545
SE3-16	AS010531	92.5	72	164.5	30	20	15	30	35	M16	/	7.1	0-400	0.52	SEB3-16	AS010546

**TENDEUR ASSO - Type SEB / TENSIONER ASSO TYPE: SEB**  
avec vis de Pré-tension / with preloading screw

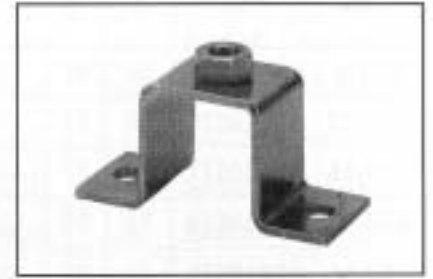
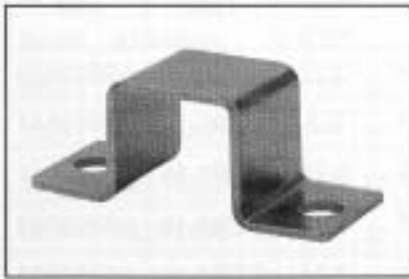
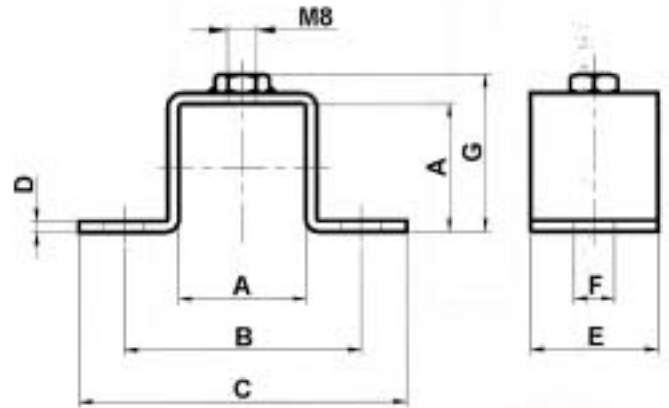
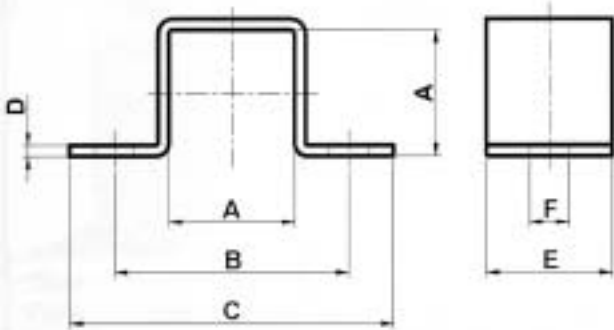


\* Vis de Pré-tension / Preloading screw

**SYSTEMES de FIXATION / ANCHORAGE SYSTEMS**

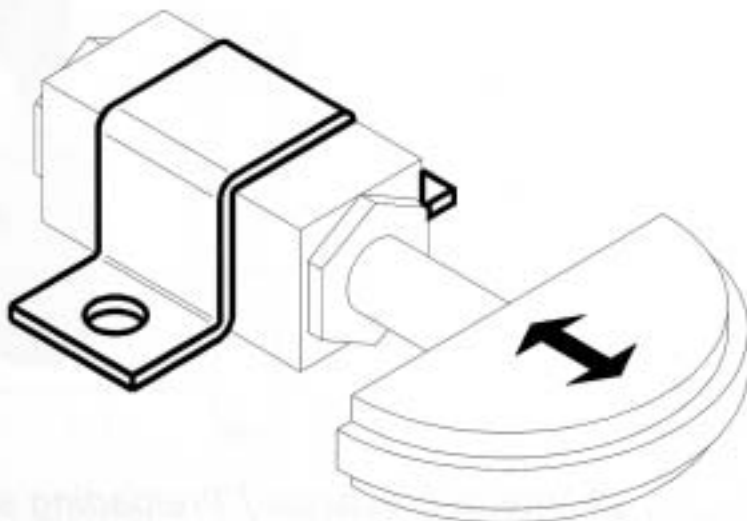
**Accessoire Bride - Type F**  
*Accessory Support Type F*

**Accessoire Bride - Type FD**  
*Accessory Support Type FD*

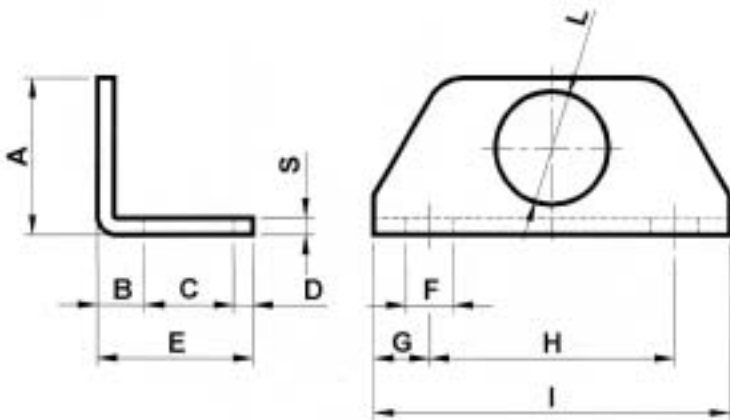


Type	cod.	A	B	C	D	E	F	G	POIDS Weight en /kg	Type	cod.
F1	AS010560	25	50	65	2	25	8.5	32	0.05	FD1	AS010565
F2	AS010561	30	60	80	2.5	30	11	37.5	0.08	FD2	AS010566
F3	AS010562	35	65	90	3	35	11	43	0.11	FD3	AS010567

**EXEMPLE de FIXATION \ EXAMPLE OF ANCHORAGE**

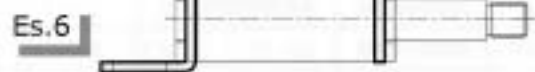
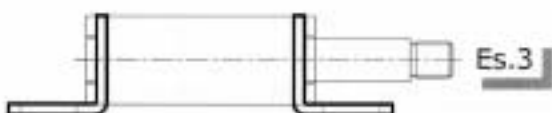
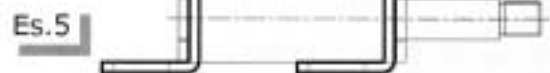
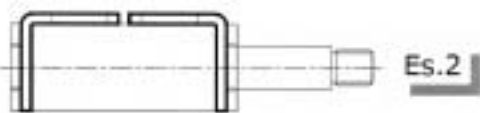
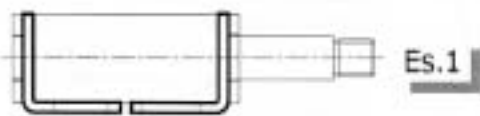
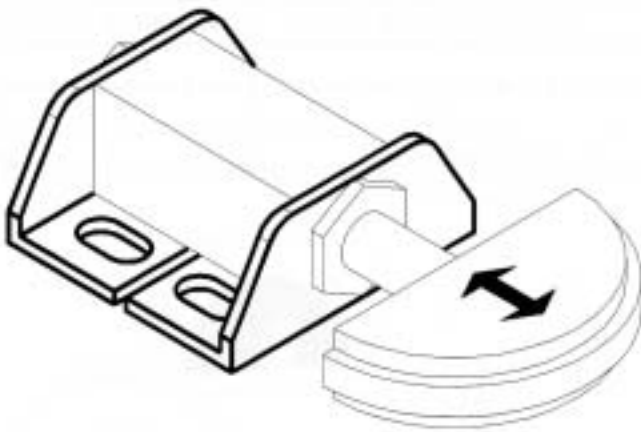


## Accessoire Bride - Type L / Accessory Support Type L










Type	cod.	A	B	C	D	E	F	G	H	I	L	S	POIDS Weight kg
L1	AS010575	28	8.5	16	3.5	28	8.5	10	44	64	20.2	3	0.05
L2	AS010576	33	11	17.5	4.5	32	8.5	10	50	70	24.2	3	0.07
L3	AS010577	39	12	25	5.5	42.5	10.5	12.5	60	85	30.2	4	0.09

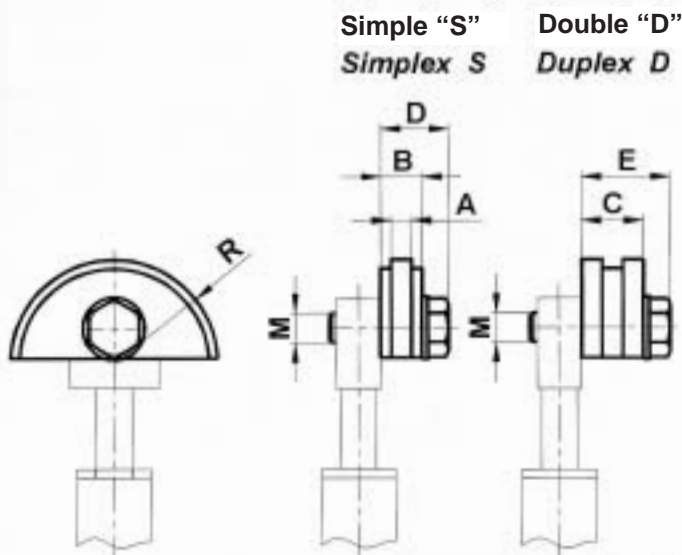
### EXEMPLE de FIXATION \ EXAMPLE OF ANCHORAGE



## TABLEAU DES "KIT" / ACCESSORIES TABLE

Chaîne - Chain DIN 8187		Type					Taille Size
ISO	Pas Pitch	ST	SP	STL	SPL	SCL	
		 pag. 104	 pag.	 pag.	 pag.	 pag.	
06-B1	3/8"x7/32"	ST 1-2 3/8" S	SP 1-2 3/8" S	STL 1-2 3/8" S	SPL 1-2 3/8" S	SCL 1-2 3/8" S	1
06-B1	3/8"x7/32"	ST 1-2 3/8" S	SP 1-2 3/8" S	STL 1-2 3/8" S	SPL 1-2 3/8" S	SCL 1-2 3/8" S	2
08-B1	1/2"x5/16"	ST 1-2 1/2" S	SP 1-2 1/2" S	STL 1-2 1/2" S	SPL 1-2 1/2" S	SCL 1-2 1/2" S	1
08-B1	1/2"x5/16"	ST 1-2 1/2" S	SP 1-2 1/2" S	STL 1-2 1/2" S	SPL 1-2 1/2" S	SCL 1-2 1/2" S	2
10-B1	5/8"x3/8"	ST 2-3 5/8" S					2
10-B1	5/8"x3/8"	ST 2-3 5/8" S	SP 3 5/8" S	STL 3 5/8" S	SPL 3 5/8" S	SCL 3 5/8" S	3
12-B1	3/4"x7/16"	ST 3 3/4" S	SP 3 3/4" S	STL 3 3/4" S	SPL 3 3/4" S	SCL 3 3/4" S	3
16-B1	1"x17.02mm	ST 3 1" S					3
06-B2	3/8"x7/32"	ST 1-2 3/8" D	SP 1-2 3/8" D	STL 1-2 3/8" D	SPL 1-2 3/8" D	SCL 1-2 3/8" D	1
06-B2	3/8"x7/32"	ST 1-2 3/8" D	SP 1-2 3/8" D	STL 1-2 3/8" D	SPL 1-2 3/8" D	SCL 1-2 3/8" D	2
08-B2	1/2"x5/16"	ST 1-2 1/2" D	SP 1-2 1/2" D	STL 1-2 1/2" D	SPL 1-2 1/2" D	SCL 1-2 1/2" D	1
08-B2	1/2"x5/16"	ST 1-2 1/2" D	SP 1-2 1/2" D	STL 1-2 1/2" D	SPL 1-2 1/2" D	SCL 1-2 1/2" D	2
10-B2	5/8"x3/8"	ST 2-3 5/8" D					2
10-B2	5/8"x3/8"	ST 2-3 5/8" D	SP 3 5/8" D	STL 3 5/8" D	SPL 3 5/8" D	SCL 3 5/8" D	3
12-B2	3/4"x7/16"	ST 3 3/4" D	SP 3 3/4" D				3
16-B2	1"x17.02mm	ST 3 1" D					3

### Accessoires pour tendeur de chaînes - type STL / Accessories for chain tighteners type : STL

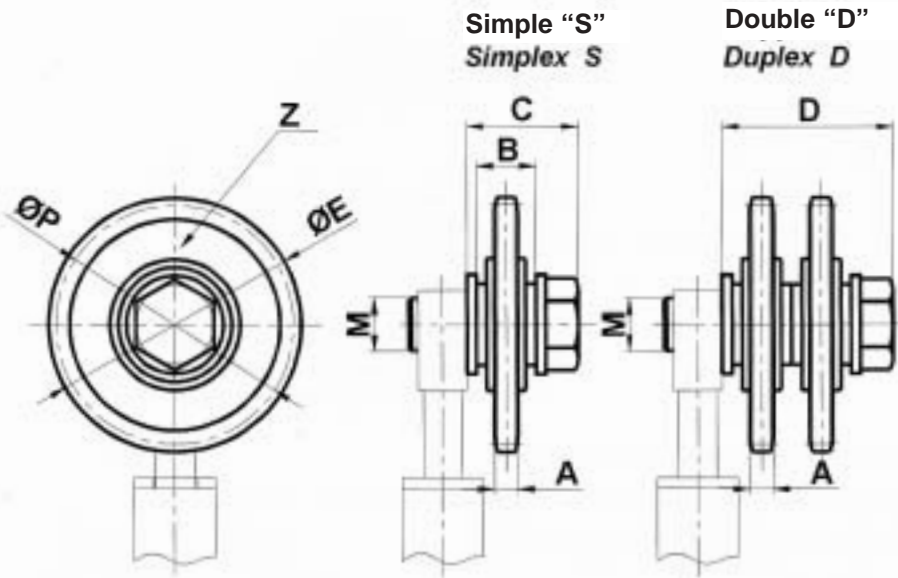


Patin à profil semi-circulaire, adapté pour des entre-axes courts. Montage le plus près du pignon.  
Matériel : polyéthylène à haute densité moléculaire.  
Vitesse de travail :  $\leq 20$  M/mn.  
Température de fonctionnement :  $\leq 70^\circ\text{C}$ .

Semi-circular sliding block suitable for reduced interaxes or for installation close to the pinion.  
Material: Polyethylene high molecular density.  
Operating speed  $\leq 20$  M/min.  
Sliding block operating temperature  $\leq 70^\circ\text{C}$ .

Type	cod. S	cod. D	A	B	C	D	E	M	R	POIDS Weight en kg	
										S	D
STL1-2 3/8"	AS010660	AS010675	5	10	18	19	27	M10	35	0.07	0.08
STL1-2 1/2"	AS010661	AS010676	7	14	20.5	23	29.5	M10	35	0.08	0.09
STL3 5/8"	AS010664	AS010679	9	16.5	25	25.5	34	M10	45	0.10	0.11
STL3 3/4"	AS010665	/	11	17.5	/	26.5	/	M10	45	0.10	/

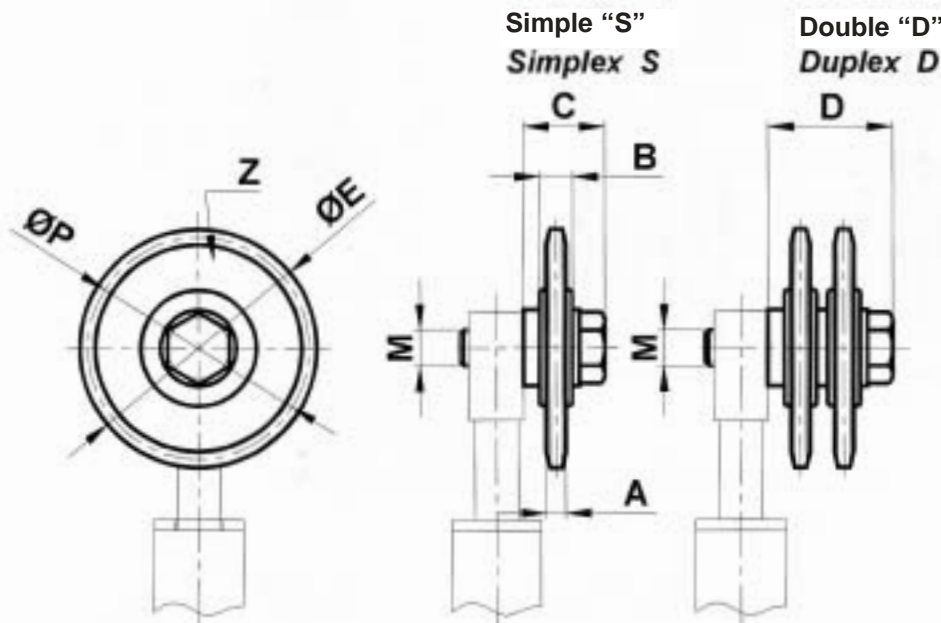
Accessoires pour tendeur de chaînes Type SPL / Accessories for chain tighteners type : SPL



Le pignon est construit en acier zingué et monté sur roulement à billes étanches.  
 Vitesse de travail :  $\leq 60$  M/mn.  
 Température de fonctionnement :  $\leq 100^{\circ}\text{C}$ .  
 The pinion is made of steel with enlarged bearing  
 Operating speed  $< 60$  M/min.  
 Operating temperature  $< 100^{\circ}\text{C}$ .

Type	cod. S	cod. D	A	B	C	D	ØE	M	ØP	Z	POIDS	
											Weight en kg	
											S	D
SPL1-2 3/8"	AS010690	AS010705	5.3	18.3	37.3	55.6	68.0	M16	63.9	21	0.2	0.35
SPL1-2 1/2"	AS010691	AS010706	7.2	18.3	37.3	55.6	77.8	M16	73.14	18	0.3	0.55
SPL3 5/8"	AS010694	AS010709	9.1	18.3	42.3	60.6	93.0	M16	86.39	17	0.45	0.8
SPL3 3/4"	AS010695	/	11.1	18.3	42.3	/	99.8	M16	91.63	15	0.6	/

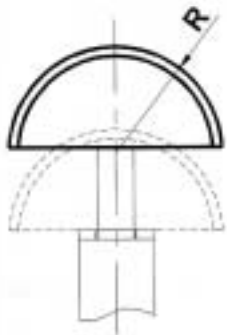
Accessoires pour tendeur de chaînes Type SCL / Accessories for chain tighteners type : SCL



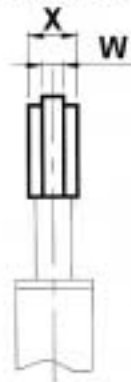
Le pignon est construit en acier zingué et monté sur roulement à billes standard.  
 Vitesse de travail :  $\leq 60$  M/mn.  
 Température de fonctionnement :  $\leq 100^{\circ}\text{C}$ .  
 The pinion is made of steel with a bearing (standardized).  
 Operating temperature  $< 100^{\circ}\text{C}$ .  
 Operating speed  $< 60$  M/min.

Type	cod. S	cod. D	A	B	C	D	ØE	M	ØP	Z	POIDS	
											Weight en kg	
											S	D
SCL1-2 3/8"	AS010720	AS010735	5.3	9	26	37	49.3	M10	45.81	15	0.10	0.22
SCL1-2 1/2"	AS010721	AS010736	7.2	9	28	41	65.5	M10	61.09	15	0.19	0.36
SCL3 5/8"	AS010724	AS010739	9.1	12	34.5	39.5	83	M12	76.36	15	0.35	0.58
SCL3 3/4"	AS010725	/	11.1	12	34.5	/	99.8	M12	91.63	15	0.55	/

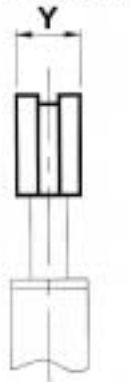
**Accessoires pour tendeur de chaînes Type ST / Accessories for chain tighteners type : ST**



Simple S  
Simplex S



Double D  
Duplex D

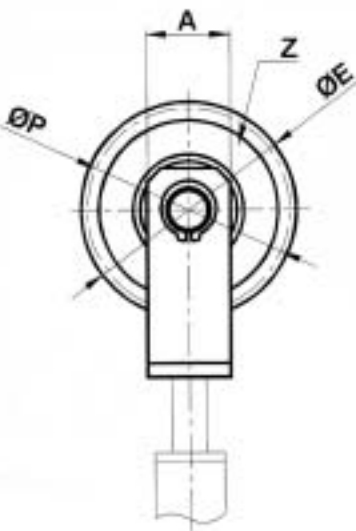


Le patin a profil semi-circulaire, très adapté pour les entre-axes courts.  
Montage le plus près du pignon.  
Vitesse de travail :  $\leq 20$  M/mn.  
Température de fonctionnement :  $\leq 70^{\circ}\text{C}$ .

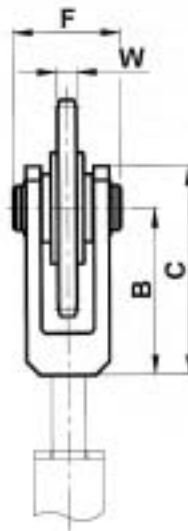
*Semi-circular sliding block suitable for reduced interaxis or for installation close to the pinion.  
Material: Polyethylene high molecular density.  
Operating speed  $\leq 20$  M/min.  
Sliding block operating temperature  $\leq 70^{\circ}\text{C}$ .*

Type	cod. S	cod. D	R	W	X	Y	POIDS Weight en kg	
							S.	D.
ST1-2 3/8"	AS010585	AS010600	35	5	16	18	0.03	0.03
ST1-2 1/2"	AS010586	AS010601	35	7	16	20.5	0.03	0.03
ST2-3 5/8"	AS010588	AS010603	45	9	17	25	0.04	0.08
ST3 3/4"	AS010590	AS010605	45	11	17	30	0.05	0.09
ST3 1"	AS010591	AS010606	55	16	18	47	0.08	0.2

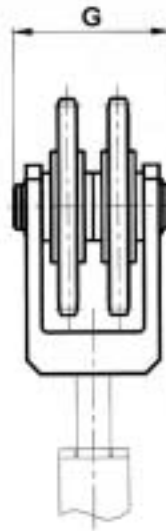
**Accessoires pour tendeur de chaînes Type SP / Accessories for chain tighteners type : SP**



Simple S  
Simplex S



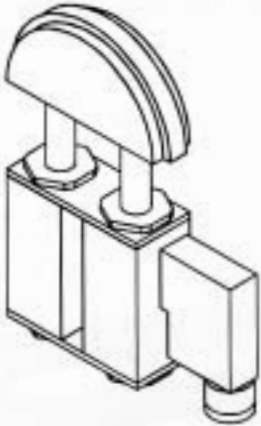
Double D  
Duplex D



La tête est composée d'une chappe, équipée de disque en acier montée sur roulement à billes étanches.  
Vitesse de travail :  $\leq 60$  M/mn.  
Température de fonctionnement :  $\leq 100^{\circ}\text{C}$ .

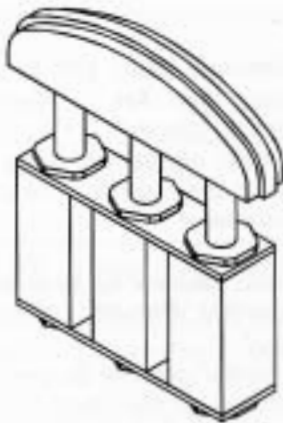
*The head is composed by a idle pinion, installed on a fork.  
The pinion is made of steel with enlarged bearing.  
Operating speed  $\leq 60$  M/min.  
Operating temperature  $\leq 100^{\circ}\text{C}$ .*

Type	cod. S	cod. D	A	B	C	ØE	F	G	W	ØP	Z	POIDS Weight en kg	
												S.	D.
SP1-2 3/8"	AS010630	AS010645	30	60	75	68.0	40	60	5.3	63.9	21	0.29	0.52
SP1-2 1/2"	AS010631	AS010646	30	60	75	77.8	40	60	7.2	73.14	18	0.36	0.65
SP3 5/8"	AS010634	AS010649	30	70	85	93.0	45	65	9.1	86.39	17	0.51	0.96
SP3 3/4"	AS010635	AS010650	30	70	85	99.8	45	65	11.1	91.63	15	0.57	1.14



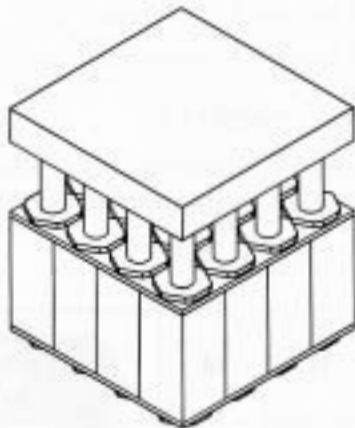
Elément élastique ASSO pour la tension de Chaînes et Courroies, complété d'un fin de course électrique, qui permet un contrôle de la tension.

*Elastic element chain and belt tighteners with travel-end switch. Every elastic element **Asso** can be equipped with an electrical control-system.*



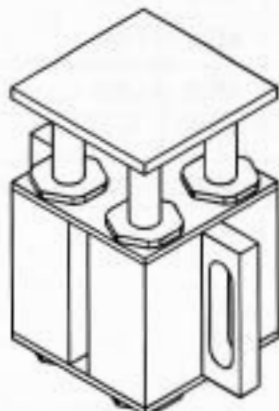
Exécution spéciale, construit à la demande, plusieurs Modules ASSO assemblés permettent d'augmenter les efforts de pression dans un faible encombrement.

*Special modular executions on request. **Asso** is a fitted element, which allows us to carry out particular groups according to the specific requests of customer.*



Plusieurs éléments regroupés en batterie, permettent la réalisation d'un support, qui peut travailler comme amortisseur.

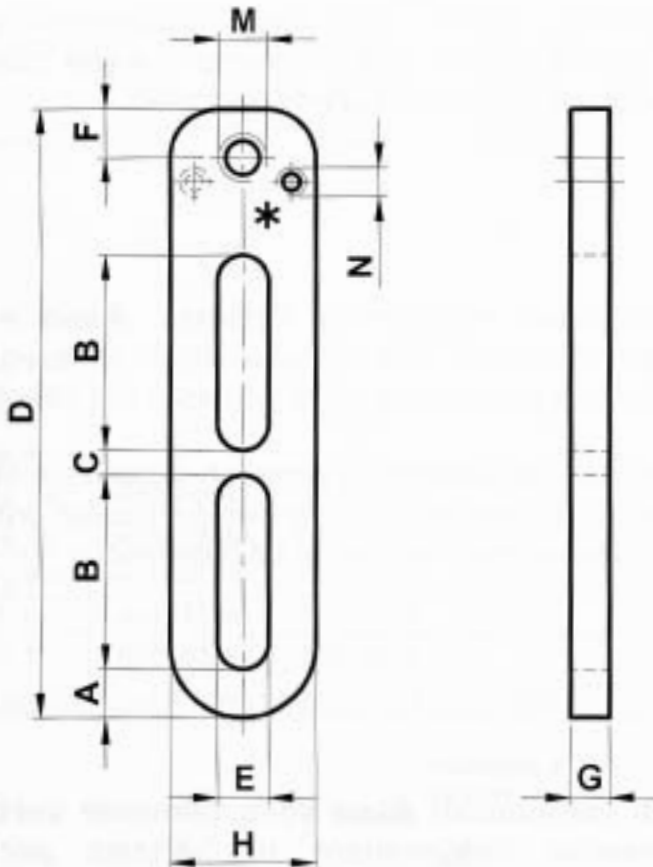
*The fitted elements **Asso** are so versatile that they can be grouped into batteries for the realization of supports, suspensions, anti-vibrating system, shock absorbing islands, etc....*



Possibilités de réaliser, à la demande, toutes conceptions.

*Using the basic components of **Asso** we are able to execute elastic tables, which are fixed through supports or plates. These parts are carried out according to specific requests.*

## Tendeur Fixe - Type : AH / FIX TENSIONER TYPE: AH



Eléments de base pour tendeur fixe type AH.

Construit en acier zingué.

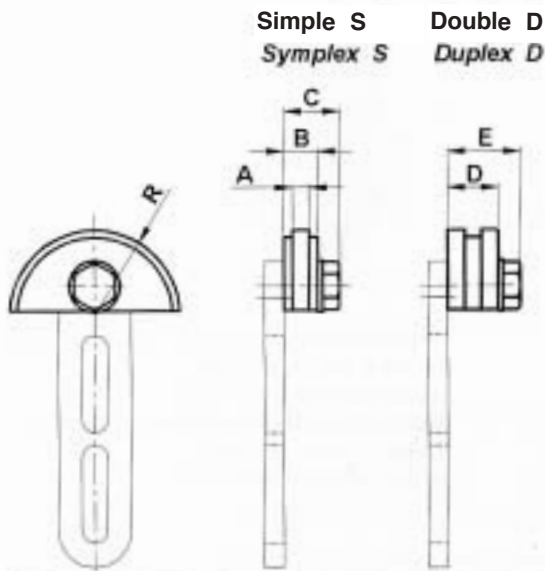
\* Une vis permet le blocage de la tête en polyéthylène.

*Basic element for fix tensioner type AH. Material: Galvanized steel.*

*\* Screw suitable to avoid the rotation of the head made of polyethylene.*

Type	cod.	A	B	C	D	E	F	G	H	M	N	POIDS Weight en kg
AH1-8	AS010760	10	40	5	125	10.5	10	8	30	M8	M6	0.2
AH1-10	AS010761	10	40	5	125	10.5	10	8	30	M10	M6	0.2
AH1-12	AS010762	10	40	5	125	10.5	10	8	30	M12	M6	0.2
AH2-10	AS010763	12	45	5	150	12.5	17	10	35	M10	M8	0.4
AH2-12	AS010764	12	45	5	150	12.5	10	10	35	M12	M8	0.4
AH2-16	AS010765	12	45	5	150	12.5	17	10	35	M16	M8	0.4

## Accessoires pour tendeur de chaînes Type TH / Accessories for chain tighteners type : TH



Le patin a un profil semi-circulaire, très adapté pour des entre-axes courts.  
Montage le plus près du pignon.  
Vitesse de travail :  $\leq 20$  M/mn.  
température de fonctionnement :  $\leq 70^\circ\text{C}$ .

*Semi-circular sliding block suitable for reduced interaxis or for installation close to the pinion.  
Material: Polyethylene high molecular density.  
Operating speed  $\leq 20$  M/min.  
Sliding block operating temperature  $\leq 70^\circ\text{C}$ .*

Type	cod. S	cod. D	A	B	C	D	E	R	Elém. de tension Tension Elements	POIDS weight en kg	
										S.	D.
TH1-3/8"	AS010770	AS010780	5	10	19	18	27	35	1-10	0.07	0.08
TH1-1/2"	AS010771	AS010781	7	14	23	20.5	29.5	35	1-10	0.08	0.09
TH2-5/8"	AS010772	AS010782	9	16.5	25.5	25	34	45	2-10	0.10	0.11
TH2-3/4"	AS010773	AS010783	11	17.5	26.5	30	39	45	2-10	0.11	0.12
TH2-1"	AS010774	AS010784	16	18	28.5	47	57.5	55	2-12	0.18	0.26
TH2-1" 1/4	AS010775	AS010785	18	20	30.5	54	64.5	55	2-12	0.32	0.50
TH2-1" 1/2	AS010776	AS010786	24	24	34.5	72	82.5	55	2-12	0.33	0.54

## Accessoires pour tendeur de courroies / Accessories for belt-tighteners

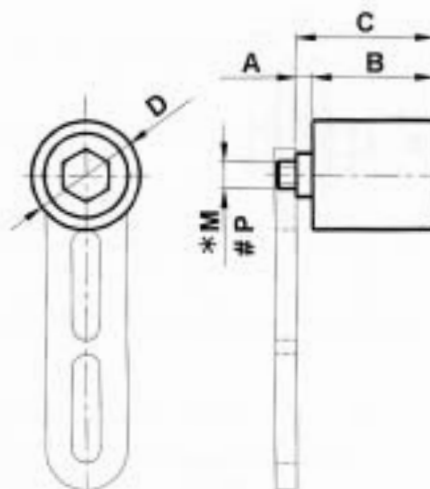
Poulie en polyamide - type **DPH**  
Rollerset of polyamid - Type **DPH**



La poulie DPH en polyamide, montée sur roulement étanche.  
Température de fonctionnement :  $\leq 70^\circ\text{C}$ .

*The roller DPH is in plastic installed on greased bearings.  
Roller operating temperature  $\leq 70^\circ\text{C}$ .*

Poulie en acier zingué - type **DAH**  
Rollerset of galvanized steel - Type **DAH**

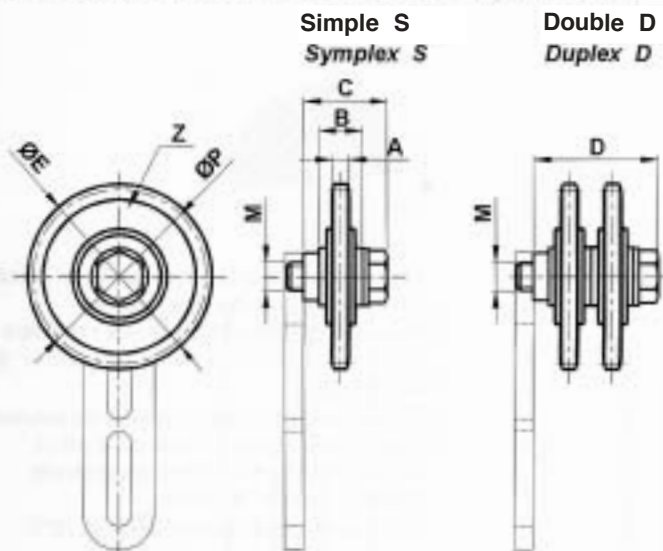


La poulie DAH est en acier zingué, montée sur roulement étanche.  
Température de fonctionnement :  $\leq 100^\circ\text{C}$ .

*The roller DAH is in galvanized steel installed on greased bearings. Roller operating temperature  $\leq 100^\circ\text{C}$ .*

Type	cod.	POIDS Weight kg	A	B	C	D	* M	# P	Elém. de tension Tension Elements	Type	cod.	POIDS Weight kg
DPH30	AS010795	0.05	3	35	38	30	M8	M8	1-8	DAH30	AS010800	0.14
DPH40	AS010796	0.13	6	45	51	40	M10	M10	1-10	DAH40	AS010801	0.32
DPH60	AS010797	0.33	8	60	68	60	M12	M16	2-12 / 2-16	DAH60	AS010802	0.80

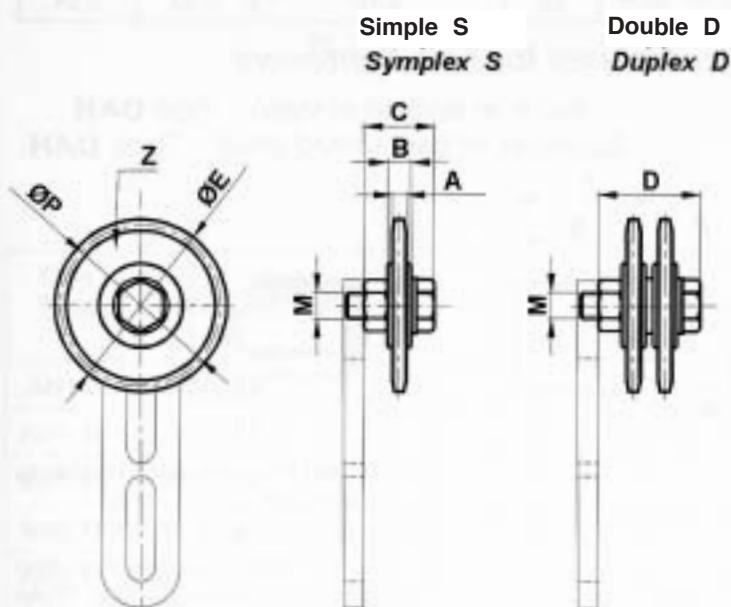
### Accessoires pour tendeur de chaînes Ttype PH / Accessories for chain tighteners type : PH



Le pignon est en acier zingué. Monté sur roulement à billes étanches.  
 Vitesse de travail :  $\leq 60$  M/mn.  
 température de fonctionnement :  $\leq 100^\circ\text{C}$ .  
 The pinion is made of steel with enlarged bearing.  
 Operating speed  $< 60$  M/min.  
 Operating temperature  $< 100^\circ\text{C}$ .

Type	cod. S	cod. D	A	B	C	D	Ø E	M	Ø P	Z	Elém. de tension Tension Elements	POIDS Weight kg	
												S.	D.
PH1-3/8"	AS010815	AS010825	5.3	18.3	35.3	53.6	68.0	M10	63.90	21	1-10	0.25	0.40
PH1-1/2"	AS010816	AS010826	7.2	18.3	35.3	53.6	77.8	M10	73.14	18	1-10	0.35	0.60
PH2-5/8"	AS010817	AS010827	9.1	18.3	38.8	57.1	93.0	M12	86.39	17	2-12	0.50	0.88
PH2-3/4"	AS010818	AS010828	11.1	18.3	38.8	57.1	99.8	M12	91.63	15	2-12	0.65	1.15
PH2-1"	AS010819	AS010829	16.2	17.7	43.7	75.4	109.0	M16	98.14	12	2-16	0.8	1.5

### Accessoires pour tendeur de chaînes Type CH / Accessories for chain tighteners type : CH



Le pignon est en acier zingué. Monté sur roulement à billes étanches.  
 Vitesse de travail :  $\leq 60$  M/mn.  
 température de fonctionnement :  $\leq 100^\circ\text{C}$ .  
 The pinion is made of steel with a bearing (standardized).  
 Operating temperature  $< 100^\circ\text{C}$ .  
 Operating speed  $< 60$  M/min.

Type	cod. S	cod. D	A	B	C	D	Ø E	M	Ø P	Z	Elém. de tension Tension Elements	POIDS Weight kg	
												S.	D.
CH1-3/8"	AS010835	AS010845	5.3	9	28	39	49.3	M10	45.81	15	1-10	0.10	0.22
CH1-1/2"	AS010836	AS010846	7.2	9	28	41	65.5	M10	61.09	15	1-10	0.19	0.36
CH2-5/8"	AS010837	AS010847	9.1	12	34.5	51.5	83.0	M12	76.36	15	2-12	0.35	0.58
CH2-3/4"	AS010838	AS010848	11.1	12	34.5	54	99.8	M12	91.63	15	2-12	0.55	0.98
CH2-1"	AS010839	AS010849	16.2	15	38	70	117.0	M16	106.12	13	2-16	1.00	1.58